

Pilot Projects Panel:

What we are Doing & What we are Learning

The logo for the 2024 Partnering Conference is centered in a white rectangular box with a thin black border. The box is set against a background of several interlocking gears in shades of teal and grey. A diagonal band of light green and teal colors runs from the top-left corner towards the center. Below the main text, there are logos for 'kytc' and 'fhwa' separated by a gear icon.

2024
PARTNERING
CONFERENCE
— acec-ky —
kytc • fhwa

Matt Sipes – KYTC
Kyle Chism – Parsons
Brian Mattingly - AEI
John Hieronymus – Lochner
Jason Littleton - WSP

Agenda



2024
PARTNERING
CONFERENCE
— acec-ky —
kytc * fhwa

- DPD Goals
- Current Pilot Overviews
 - 2-80202 – US 60
 - 3-320 – KY 100
 - 4-8954 – KY 3155
 - 6-80150 – KY 717
 - 9-80101 – KY 36
- Open Discussion



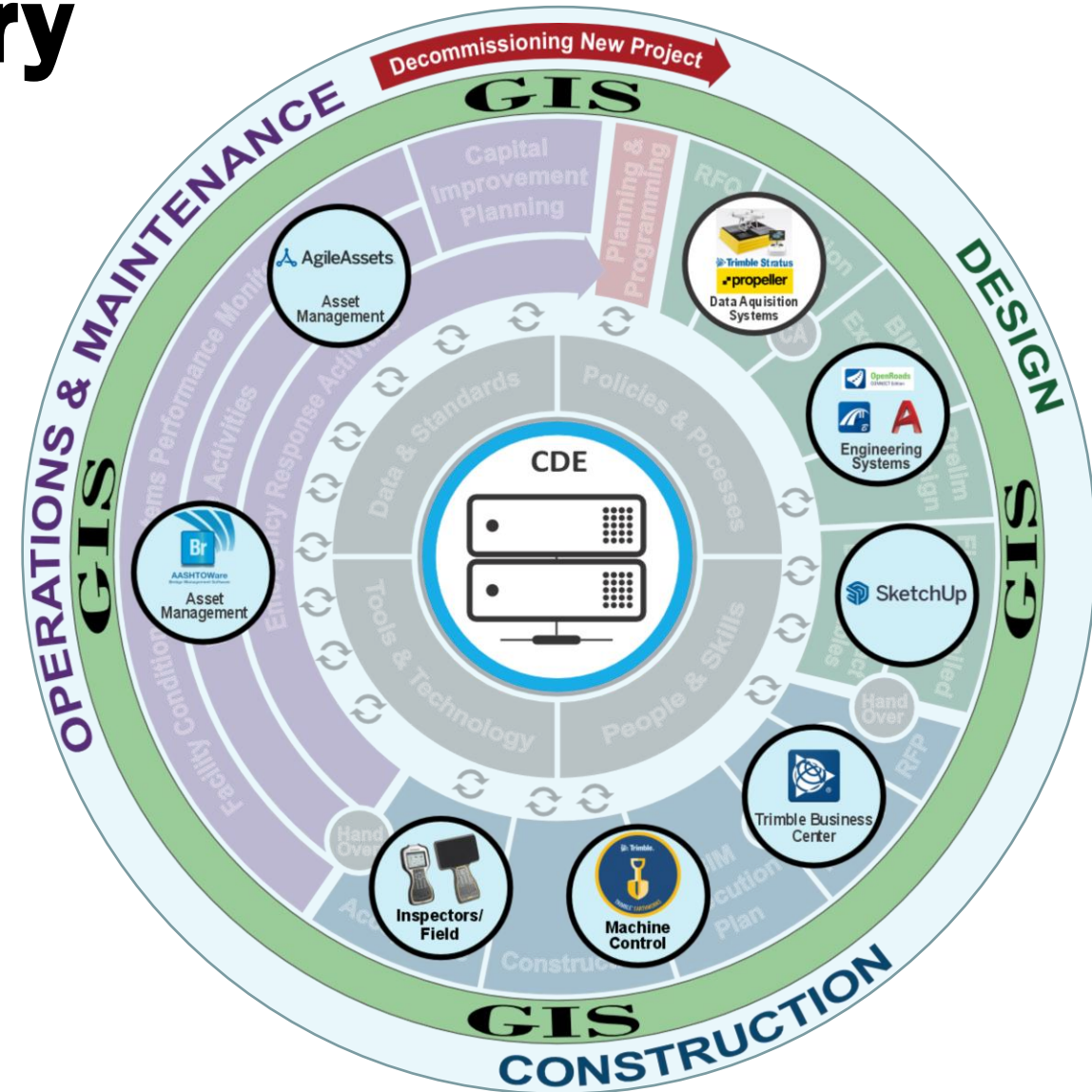
Digital Project Delivery

- Digital Project Delivery (DPD) at the Kentucky Transportation Cabinet is the comprehensive management of our transportation network through the **focused delivery of projects utilizing digital data and 3D modeling to create a centralized living representation of our network and its assets**. This is housed in a common data environment that can be read, used, and contributed to by all elements of the project development and preservation processes. It offers data users more efficient and intuitive information exchange throughout an asset's lifecycle.

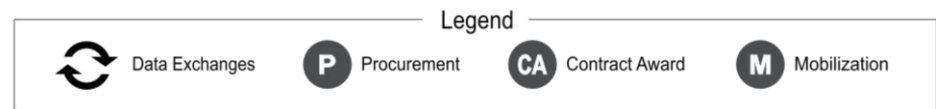


2024
PARTNERING
CONFERENCE
— acec-ky —
kytc * fhwa

Digital Project Delivery



2024
PARTNERING
CONFERENCE
 acec-ky
 kytc * fhwa



DPD – Focus on Pain Points



- While trying to move toward the goal - How can we make things
 - Better
 - Easier
 - Clearer
- Focused on small pieces of projects instead of the entire digital delivery of a project



What we want from this presentation

<https://www.mentimeter.com>

Code - 6452 1089

Show what we are working on!

Feedback from the industry!

Ask questions – Give comments!

What issues do you foresee?

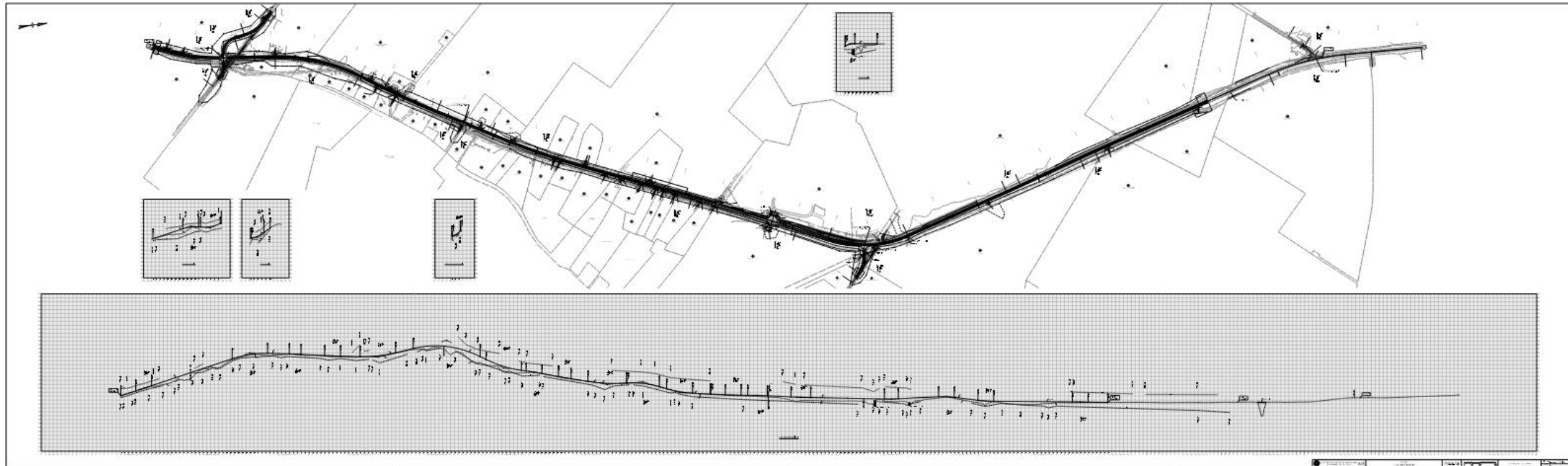
What else should we try?



Parsons US 60

District 2 PM Larry Krueger, PE
Parsons Chuck Allen, PE, LSIT
Manuscript Style Plans

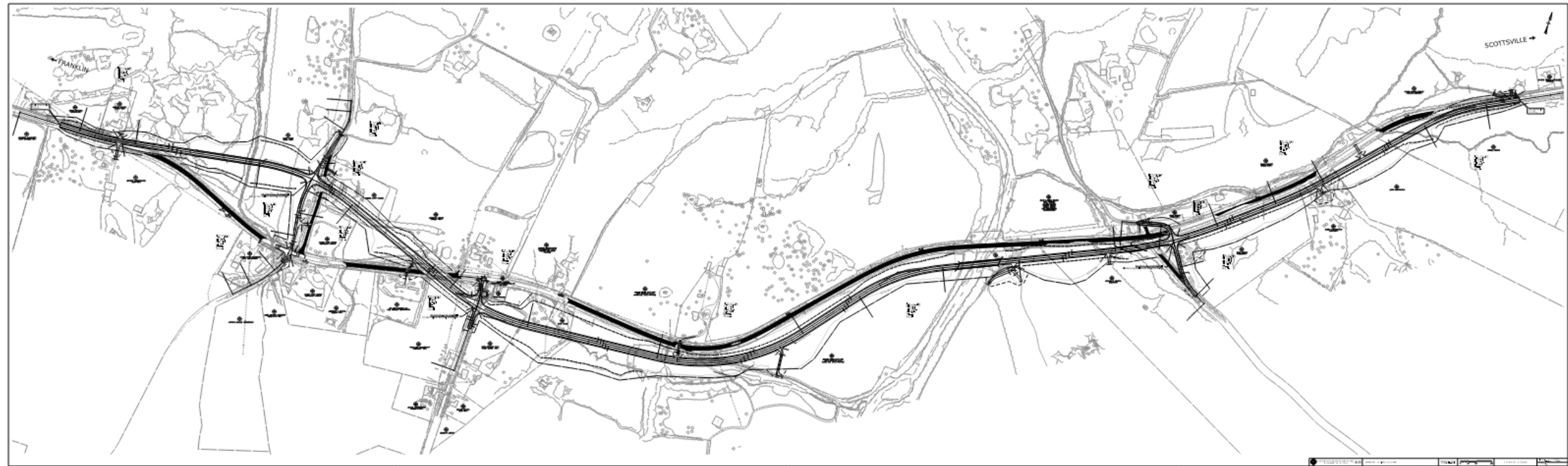
2024
PARTNERING
CONFERENCE
— acec-ky —
kytc * fhwa



Parsons KY 100

District 3 PM Stewart Lich, PE
Parsons PM Arrell Thompson, PE
Manuscript Style Plans

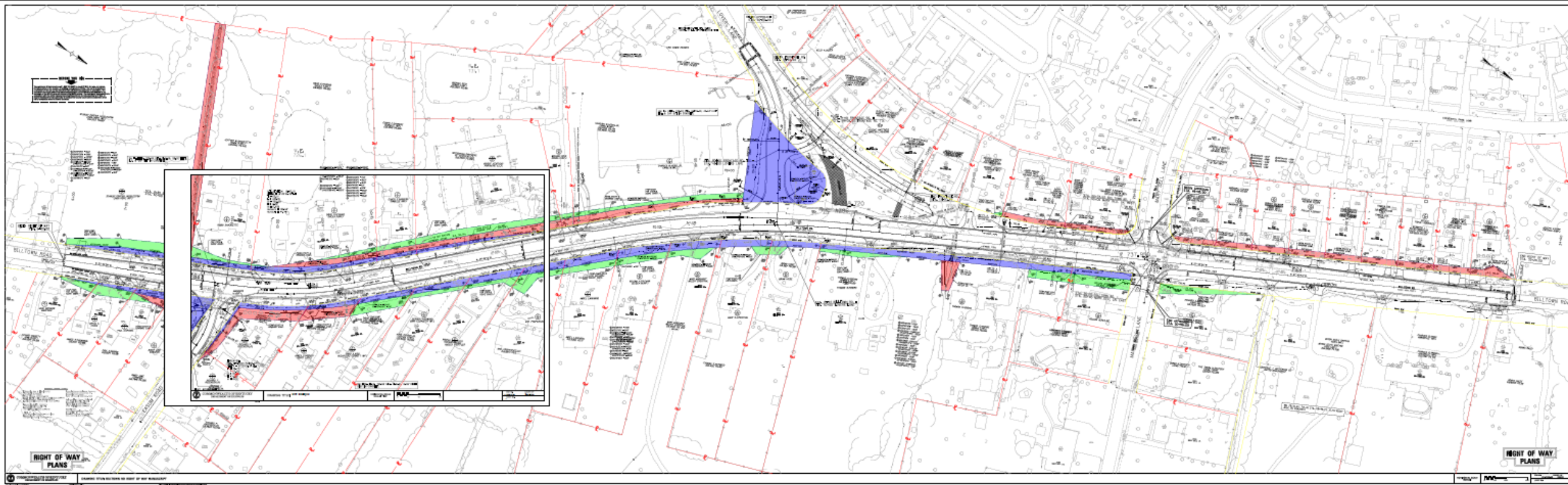
2024
PARTNERING
CONFERENCE
— acec-ky —
kytc * fhwa



Parsons US 60/KY 100

2024
PARTNERING
CONFERENCE
— acec-ky —
kytc * fhwa

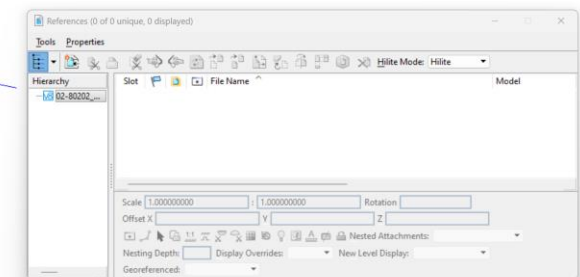
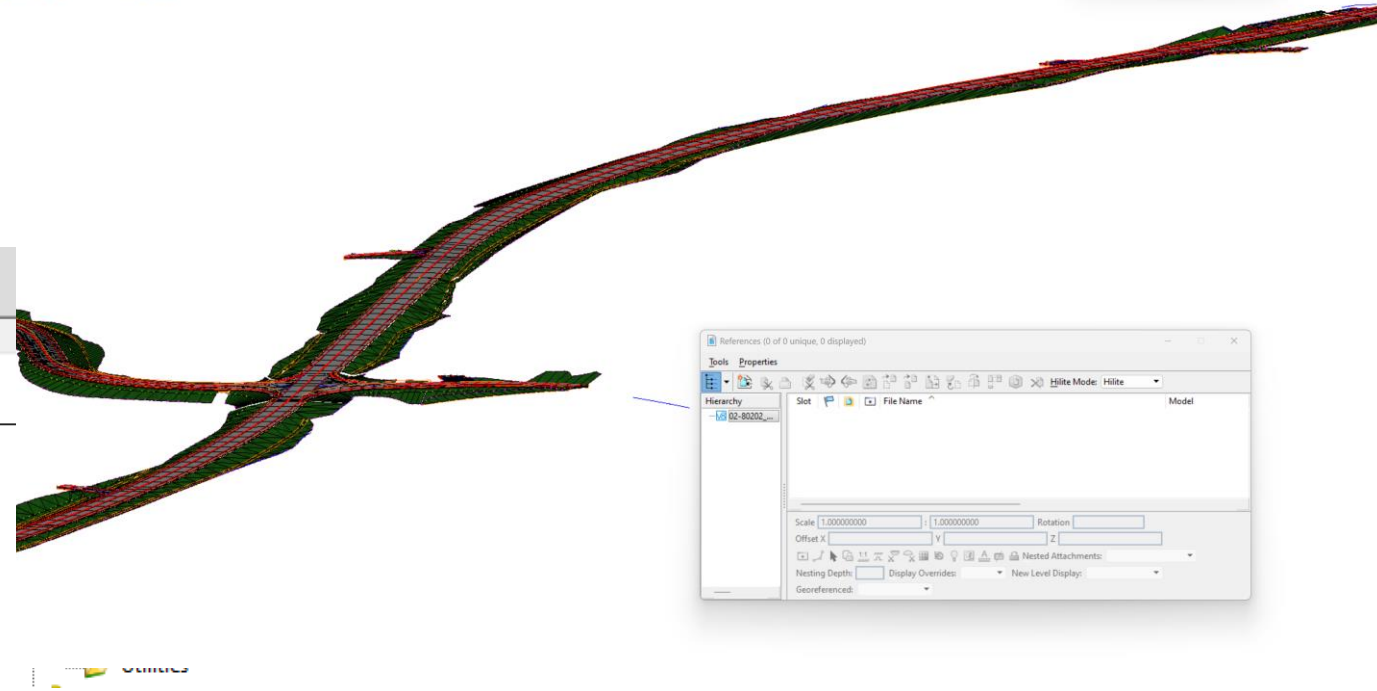
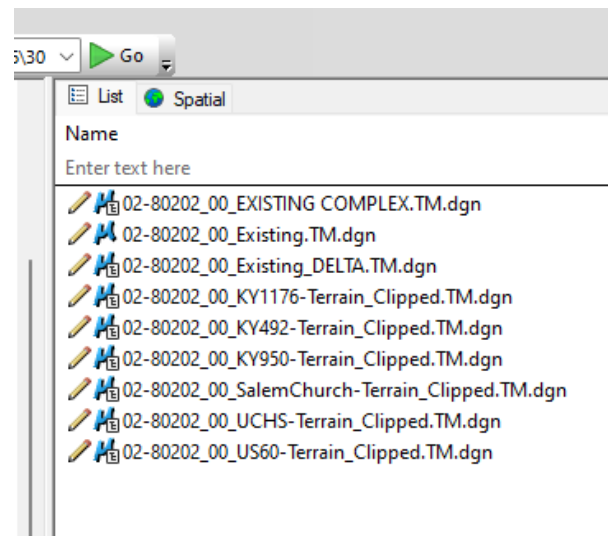
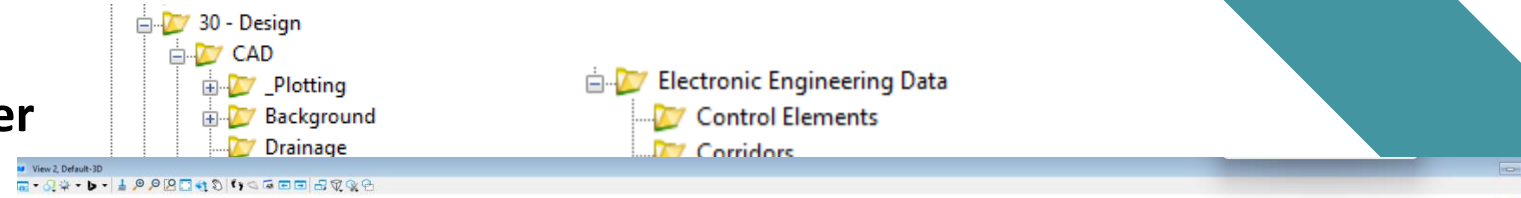
ROW Plans



Parsons US 60/KY 100

Handoff to Geotech:

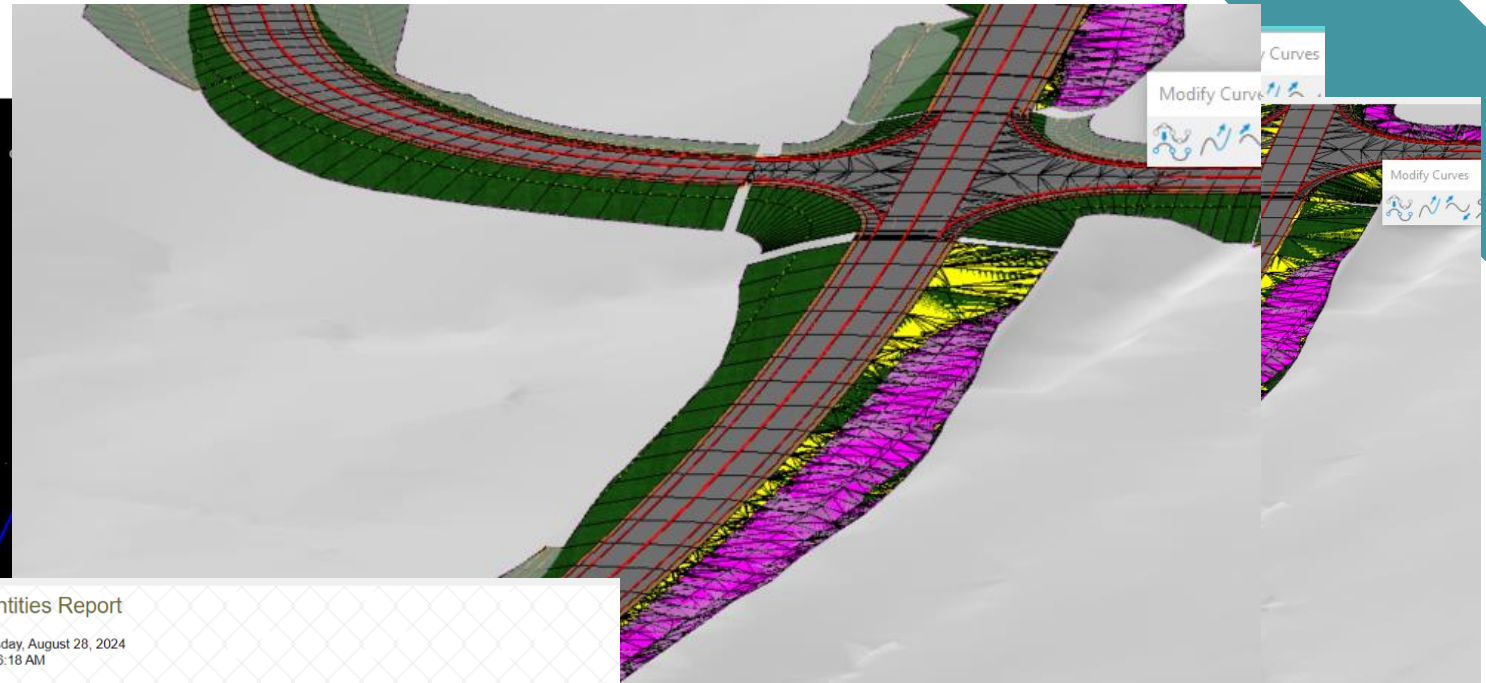
- Need to easily rebuild files and folder structure
- Model container file - No references
- Clarification with file names
- Don't overload the data shared



Parsons US 60/KY 100

Earthwork Quantities - Flexibility

- Average end area - all grading
- Workzones – total by area
- Roadside grading – total by side



End Area Volume Report
Report Created: Wednesday, August 28, 2024
Time: 9:56:18 AM

Cross Section Set Name: US 60
Alignment Name: US 60
Input Grid Factor: 1.000
Note: All units in this report are in feet, square feet and cubic yards unless specified otherwise.

Baseline Station	Factor	Area	Cut Volume	Adjusted
100+20.00	1.000	27.547	0.000	0.000

Earthwork Quantities Report
Report Created: Wednesday, August 28, 2024
Time: 10:56:18 AM

Cross Section Set Name: <None>
Alignment Name: <None>
Input Grid Factor: 1.000
Note: All units in this report are in feet, square feet and cubic yards unless specified otherwise.

Baseline Station	Baseline Station	Cut Shrink/Swell Factor	Station Cut Area	Station Cut Volume	Adjusted Station Cut	Fill Shrink/Swell Factor	Station Fill Area	Station Fill Volume	Adjusted Station Fill	Mass Ordinate
0+00.00	0+00.00	1.000		31710.019	31710.019	1.000		10744.019	10744.019	
				Station Total:	31710.019				10744.019	20966.001
Grand Total:				31710.019	31710.019			10744.019	10744.019	



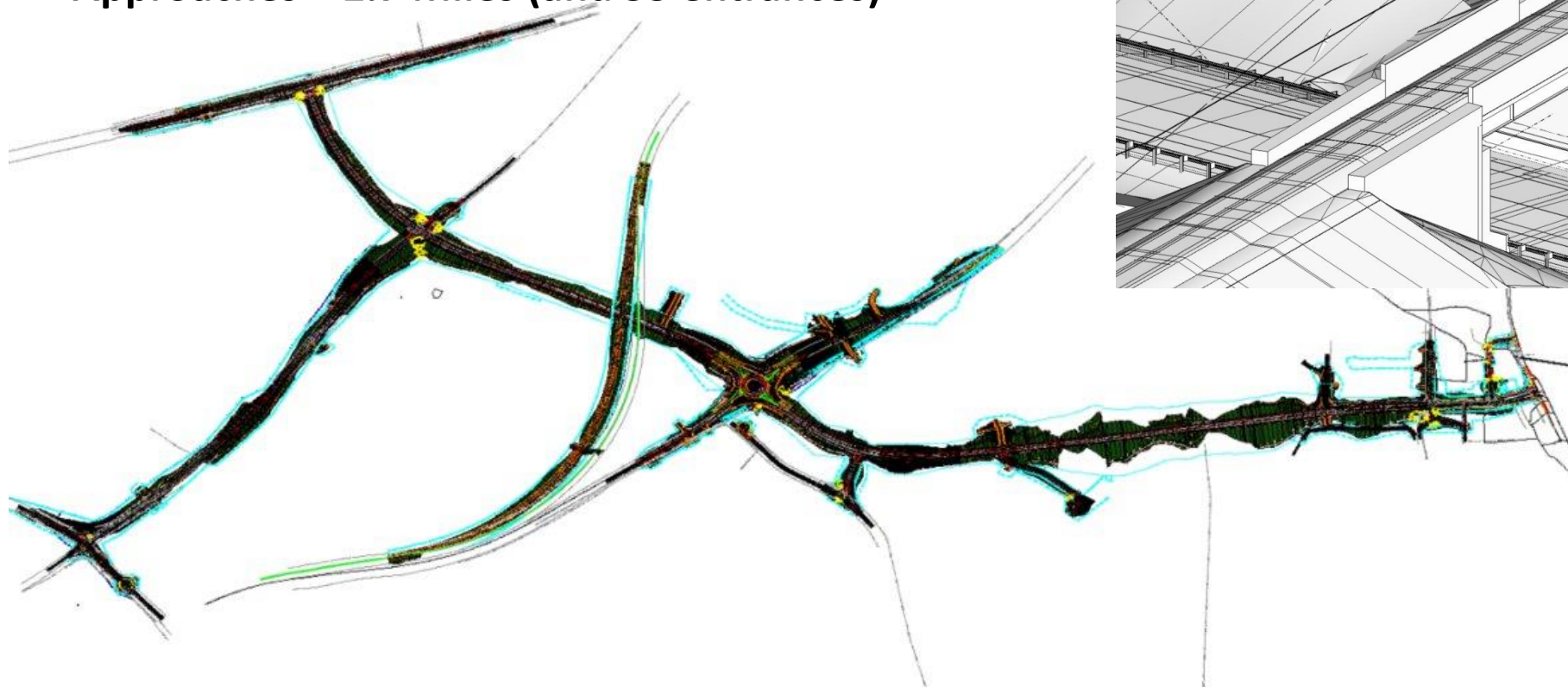
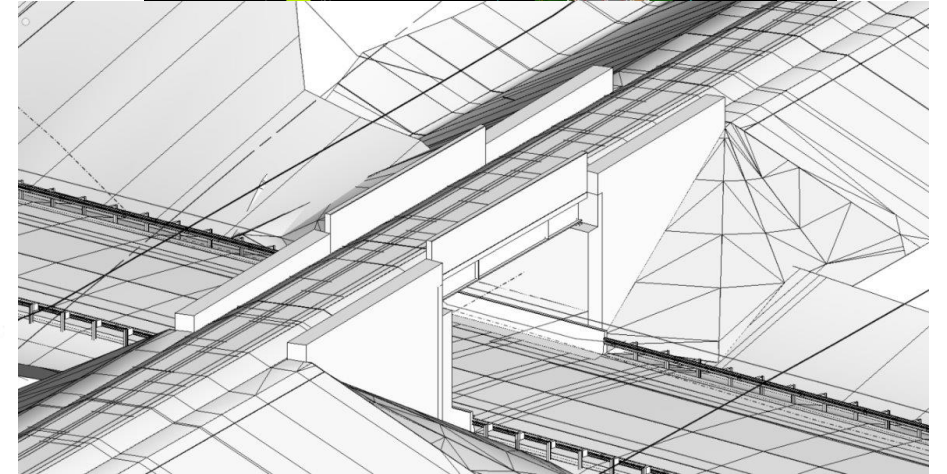
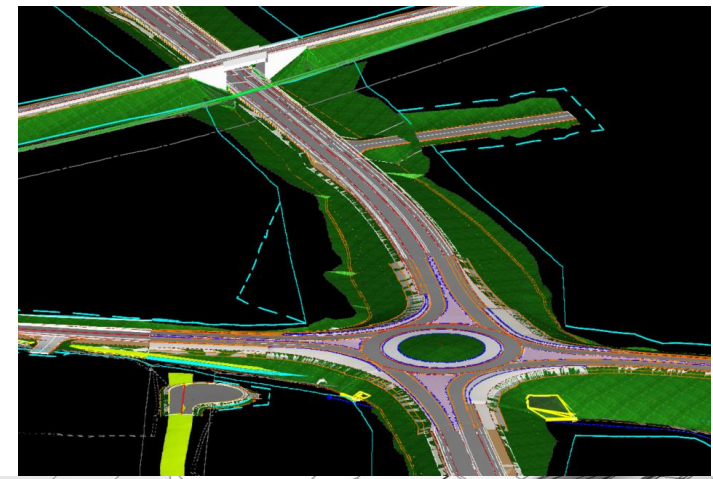
KY 3155 - AEI

Final construction plans are being prepared
Letting to Construction - ASAP

Project Length

Mainline = 1.4 Miles

Approaches = 2.7 Miles (and 53 entrances)



KY 3155 - AEI

UTILITIES

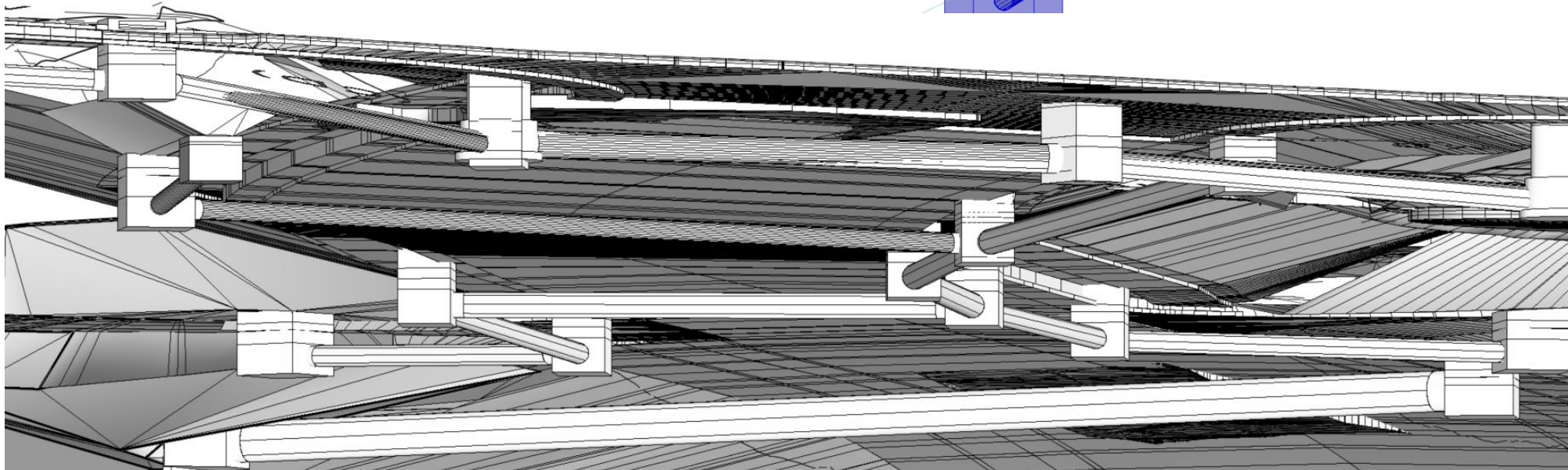
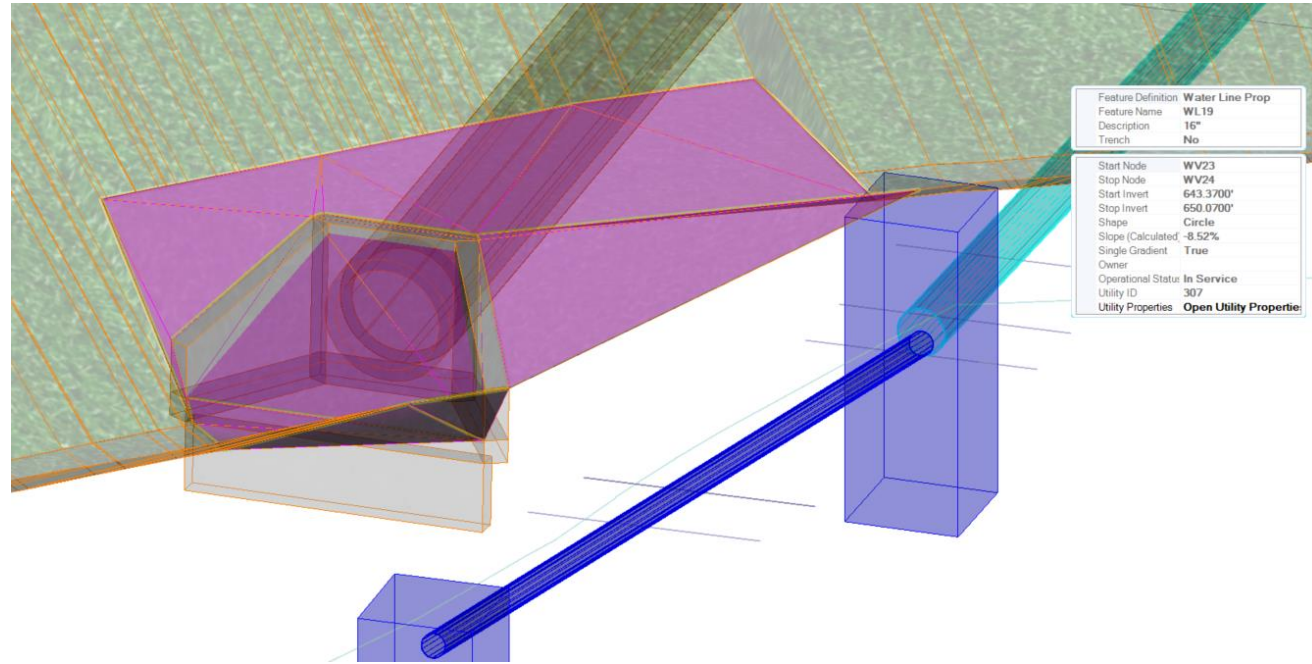
STORM PIPES

BOX CULVERT

RAILROAD BRIDGE

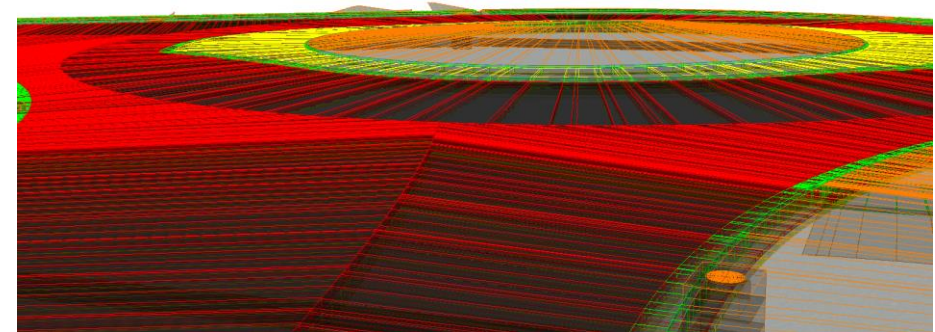
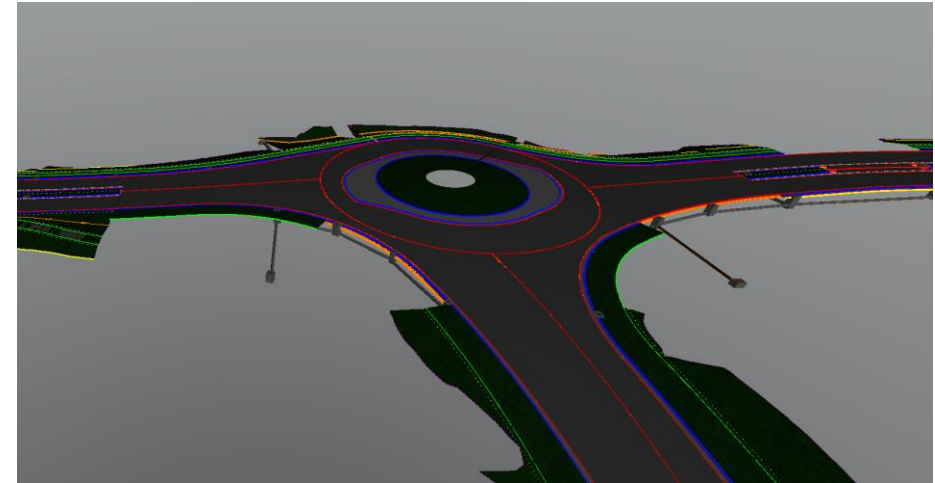
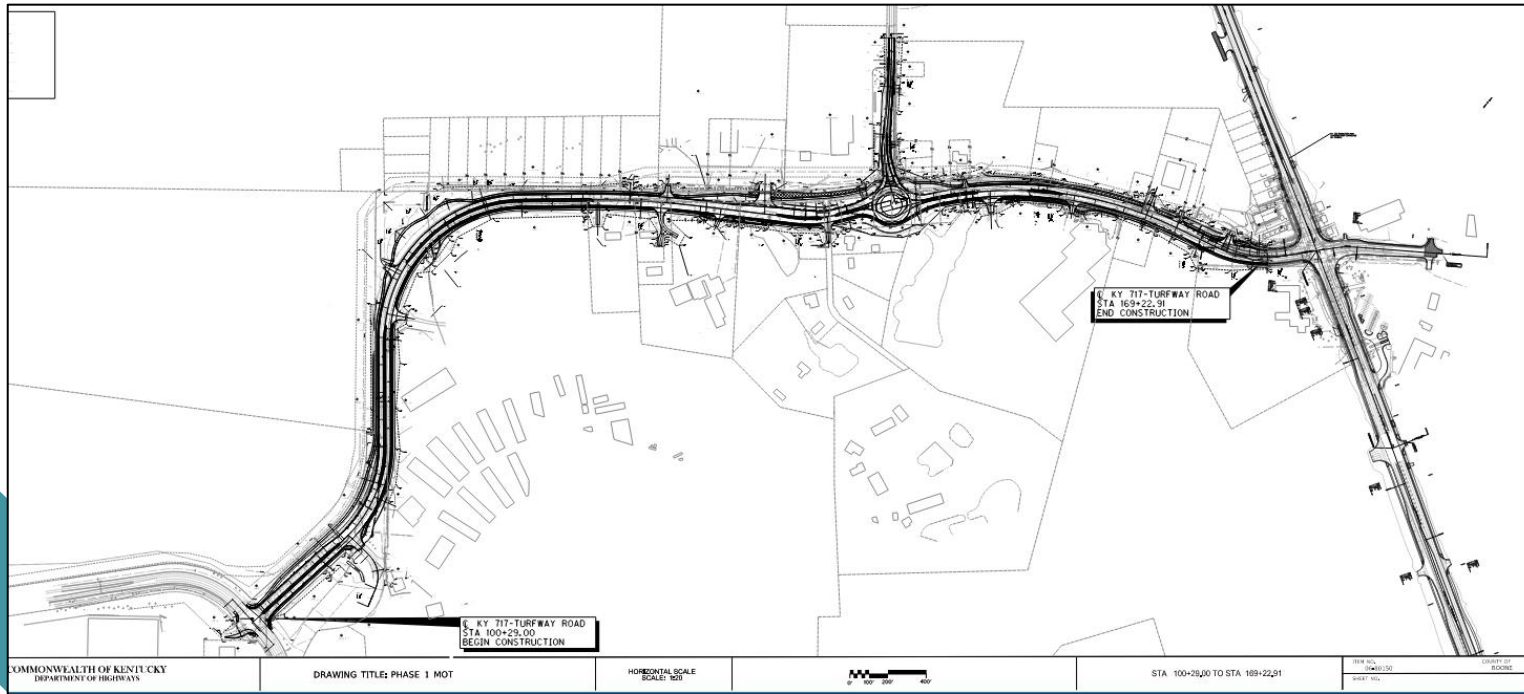
FINISHED GRADE BREAKLINES

SUBGRADE BREAKLINES



KY 717 Turfway Road- Lochner

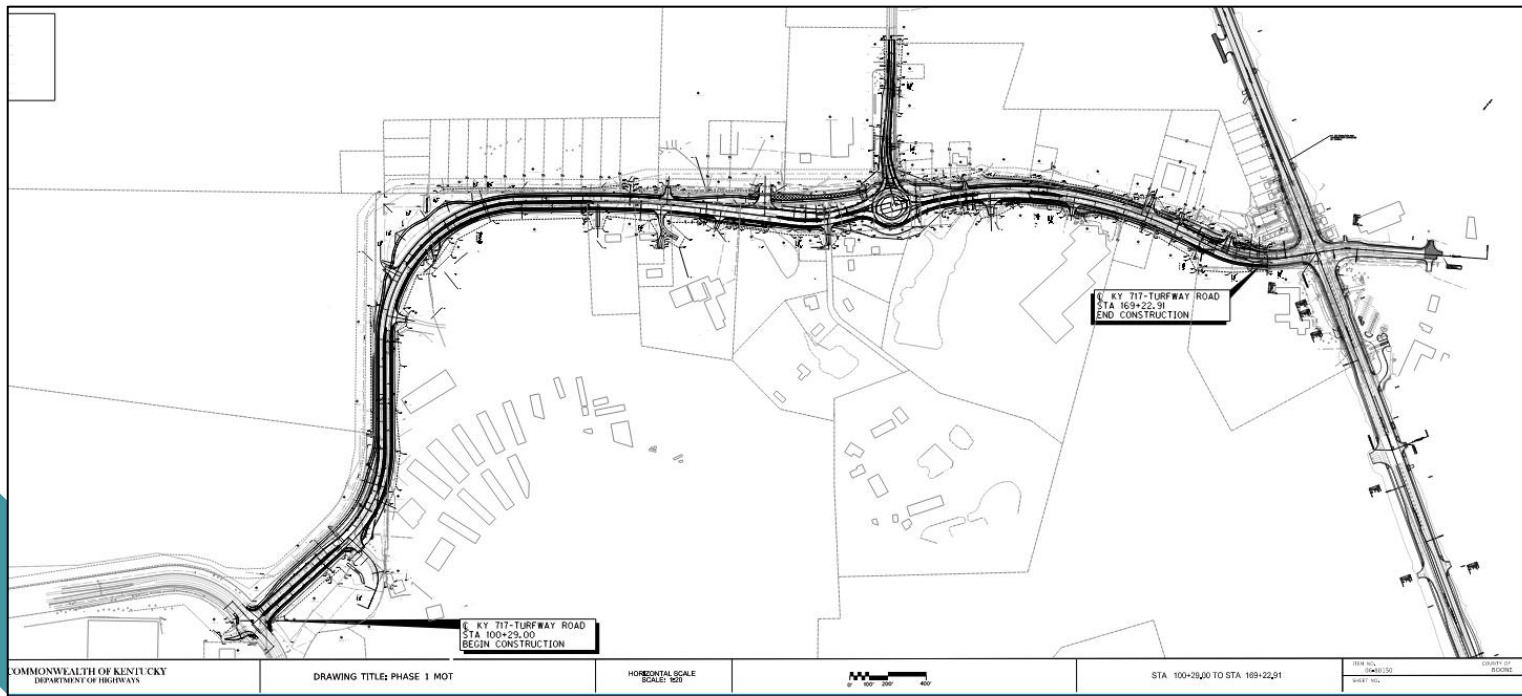
District 6 KYTC PM Mike Bezold



2024
PARTNERING
CONFERENCE
— acec-ky —
kytc • fhwa

KY 717 Turfway Road- Lochner

District 6 KYTC PM Mike Bezold



Goals/Highlights

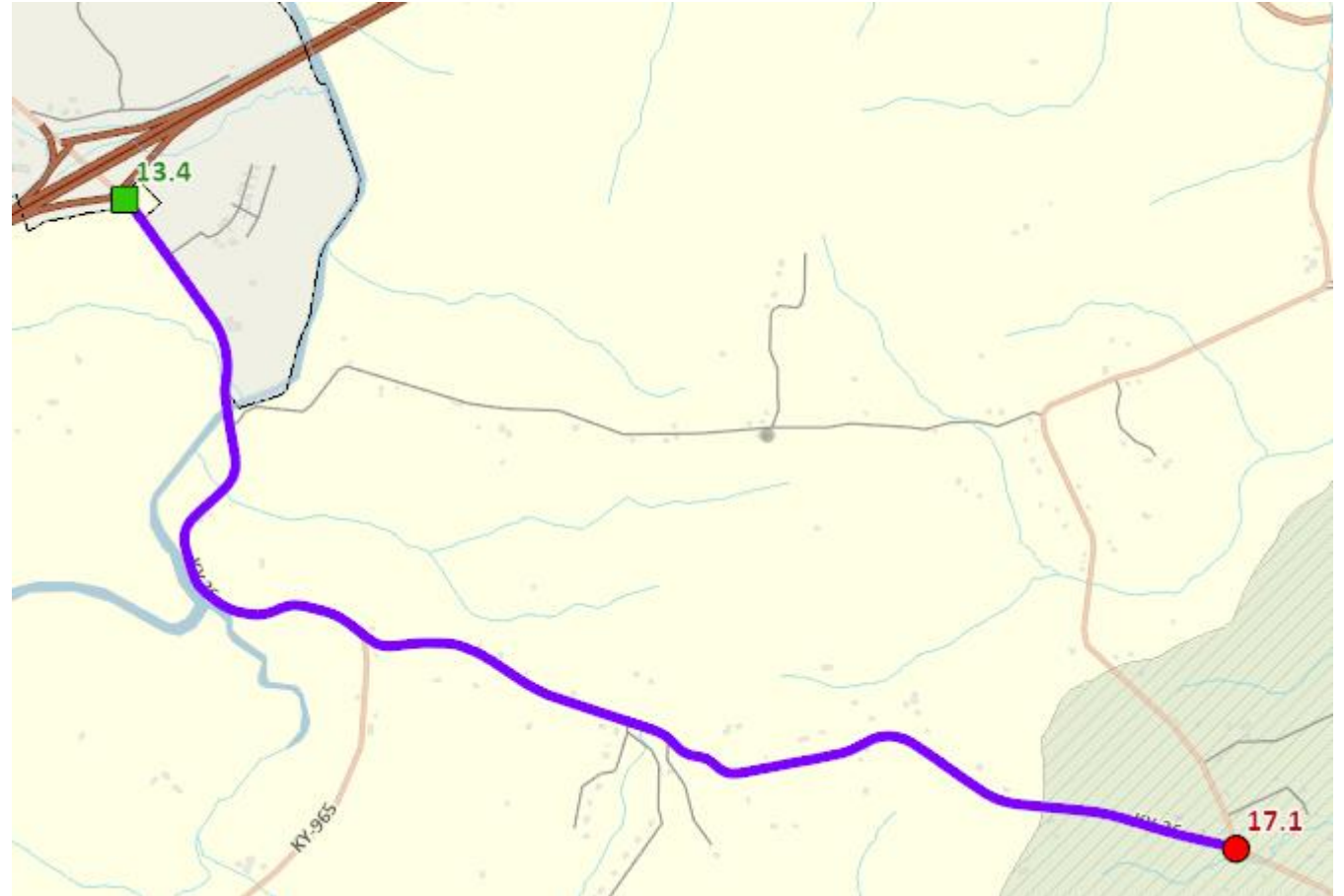
- MOT Phases modeled
- Breaklines as the deliverable
- Drainage Cadded in 3d (deconflict)
- Simplify Plan Set
 - Quantities match breaklines
 - Quantities in 2nd Sheet Form
 - Everything in rollplot form

2024
PARTNERING
CONFERENCE
— acec-ky —
kytc • fhwa

KY 36 – Bath Co – WSP

District 9 KYTC PM Blake Jones
WSP PM Billy Garrison

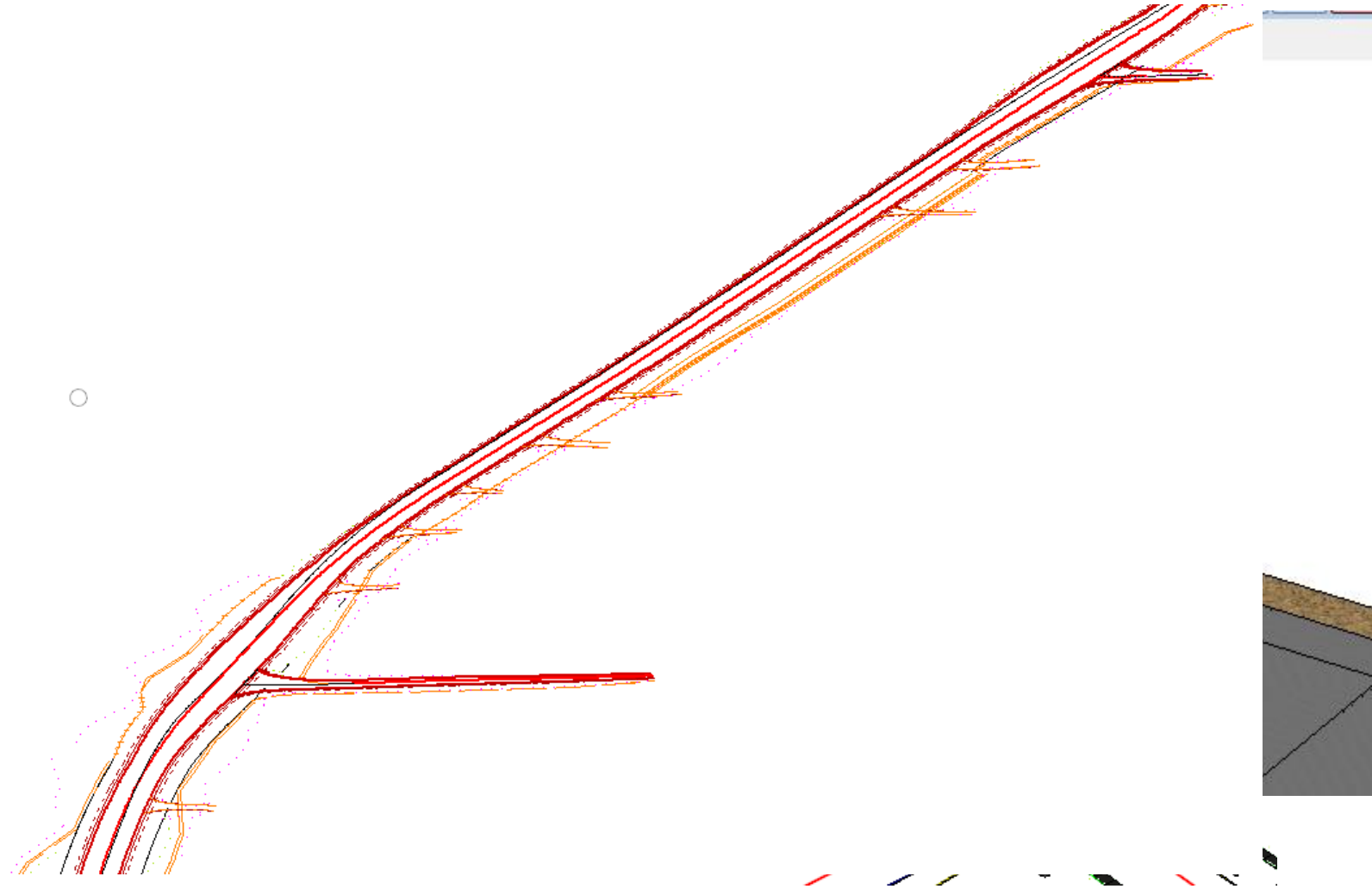
- 3.75 miles rural 2-lane improvements
 - I-64 to KY 965



KY 36 – Bath Co – WSP

District 9 KYTC PM Blake Jones
WSP PM Billy Garrison

- 3D Breakline Delivery
- Utilize Item Types
- 3D Utilities
- Model complex MOT phasing

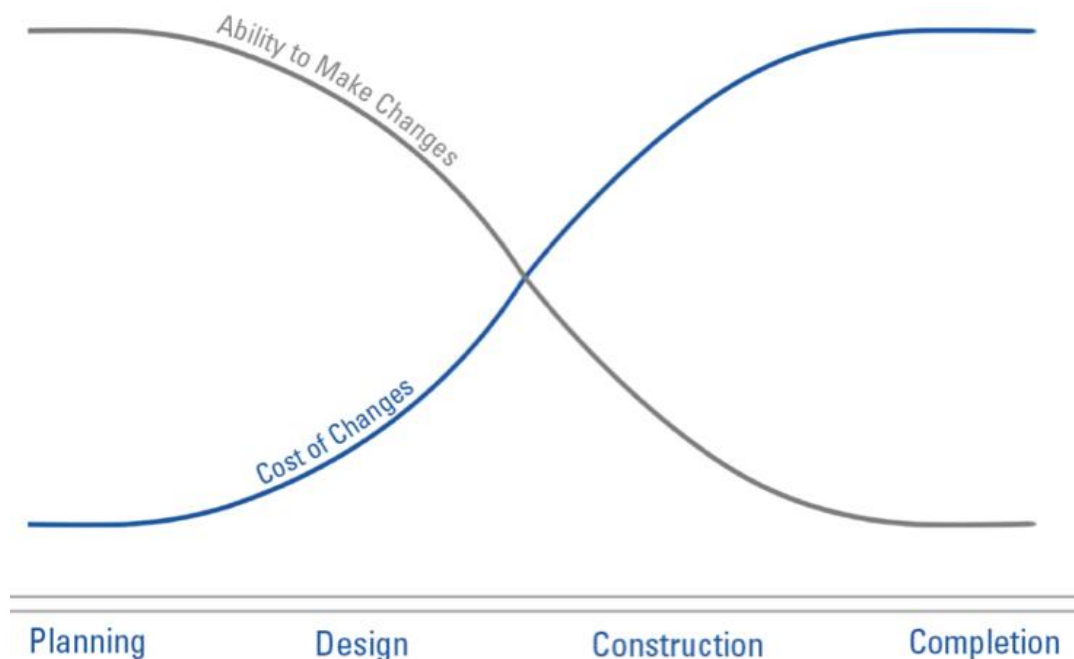


Open Discussion

- Problems? Issues? Hurdles?
- What to focus on next?

<https://www.mentimeter.com>

Code - 6452 1089



2024
PARTNERING
CONFERENCE
— acec-ky —
kytc * fhwa

SCAN TO SIGN IN



Required to receive PDH's

